

FOR LEASE

**HIGHWAY 427 & DUNDAS STREET EAST
(MISSISSAUGA, ON)**



Owned & Managed By:



PROPERTY PROFILE & LOCATION

- Located on the south side of Dundas Street East just west of Highway 427
- Great street exposure and signage opportunities
- Close to Highways 427, 401, QEW and Gardiner Expressway
- Plenty of free tenant and visitor parking
- Along public transit bus line
- Several amenities and retailers nearby
- Ideal for many industrial and warehouse uses

AVAILABLE SPACE

Unit #	Size (SF)	Net Rent	TMI	Available
1	13,475	\$9.95	\$9.59*	TBD

* TMI includes utilities

ADDITIONAL SPACE DETAILS

- Truck level shipping door at rear
- Clear height of over 13 feet
- Incredible signage opportunity facing Dundas Street East
- Pylon signage available
- Approximately 60 feet of storefront



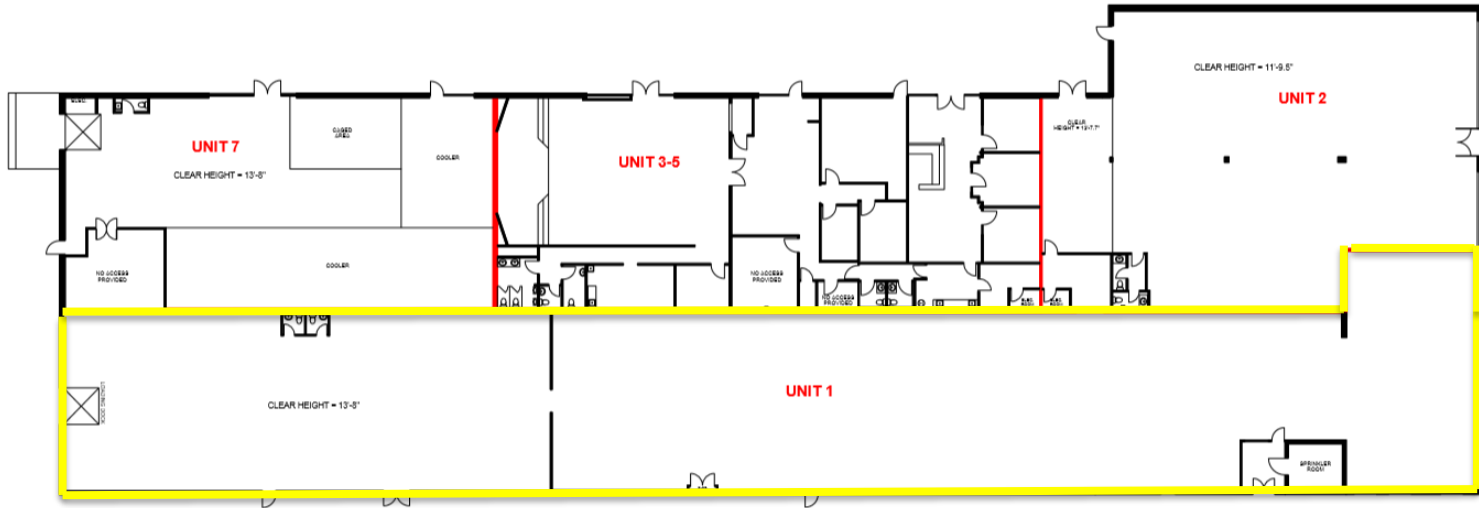
FIRM CAPITAL PROPERTIES LEASING CONTACT

Kevin Kandaharian, National Director of Leasing

163 Cartwright Avenue, Toronto, ON M6A 1V5

T. 416.635.0221 ext. 349 | E. kkandaharian@firmcapital.com

HIGHWAY 427 & DUNDAS STREET EAST
(MISSISSAUGA, ON)



 AVAILABLE SPACE

Owned & Managed By:

**Firm
Capital**
Commercial Properties

FIRM CAPITAL PROPERTIES LEASING CONTACT

Kevin Kandaharian, National Director of Leasing

163 Cartwright Avenue, Toronto, ON M6A 1V5

T. 416.635.0221 ext. 349 | E. kkandaharian@firmcapital.com