

FOR LEASE

51 Avenue NW & 91st NW
(Edmonton, AB)



PROPERTY PROFILE & LOCATION

- High exposure along 51st Avenue
- Excellent South Edmonton location with easy access to 91st Street, 99th Street and Whitemud Drive
- Ample parking and truck marshaling
- Outside storage and fenced yards available



AVAILABLE SPACE

Unit #	Size	Net Rent	TMI	Shipping	Office Area	Clear Height	Available
9437	2,749	\$8.25	\$5.08	1 drive-in	25%	17ft	Immediately
9403-9405	7,815	\$9.50	\$5.08	3 drive-in	30%	16ft	Immediately
9431-9433	5,633	\$8.25	\$5.08	2 drive-in	25%	17ft	July 2020

Owned & Managed By:



FIRM CAPITAL PROPERTIES LEASING CONTACT

Kevin Kandaharian, National Director of Leasing

163 Cartwright Avenue, Toronto, ON M6A 1V5

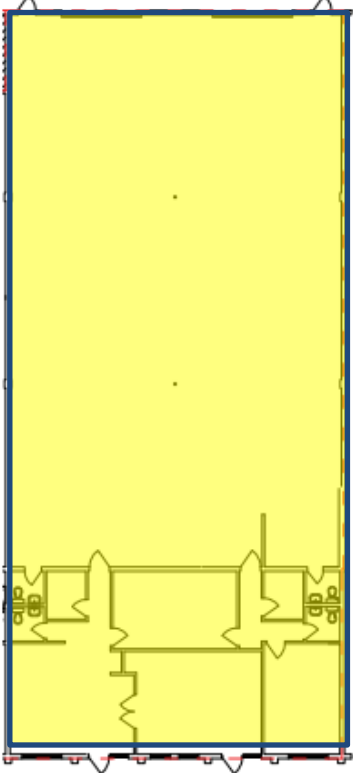
T. 416.635.0221 ext. 349 | E. kkandaharian@firmcapital.com

9407-9437 51 AVENUE NW, EDMONTON, AB

INDUSTRIAL SPACE

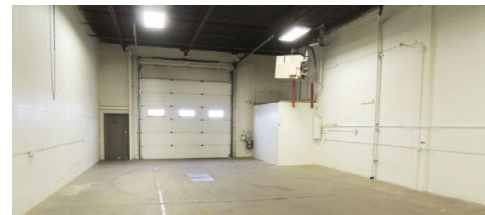
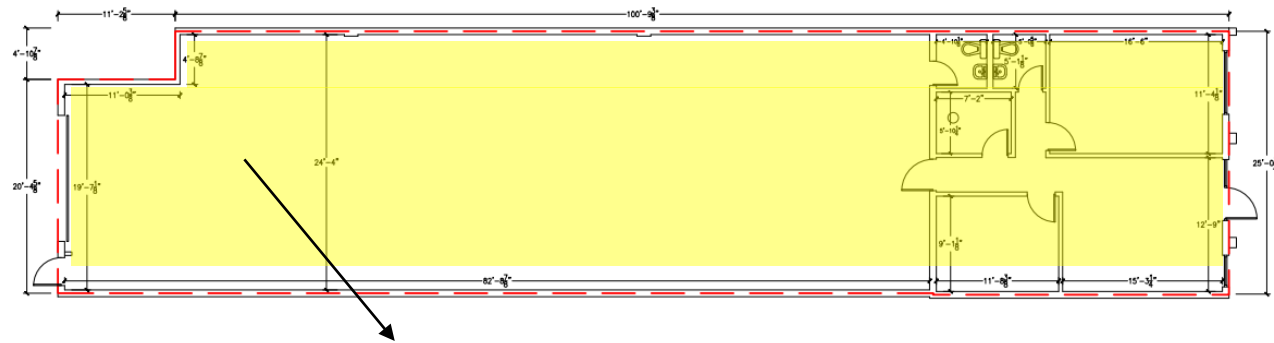
51 Avenue NW & 91st NW
(Edmonton, AB)

9431-9433

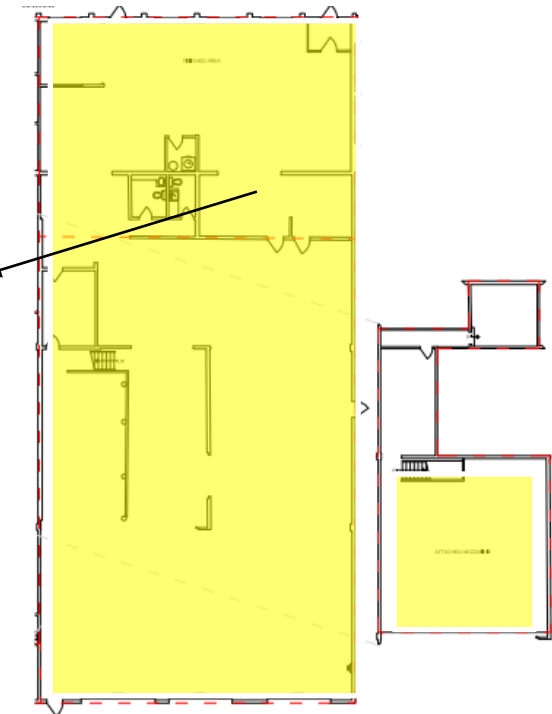


AVAILABLE SPACE

9437



9403-9405



Owned & Managed By:

Firm Capital
Commercial Properties

FIRM CAPITAL PROPERTIES LEASING CONTACT

Kevin Kandaharian, National Director of Leasing

163 Cartwright Avenue, Toronto, ON M6A 1V5

T. 416.635.0221 ext. 349 | E. kkandaharian@firmcapital.com